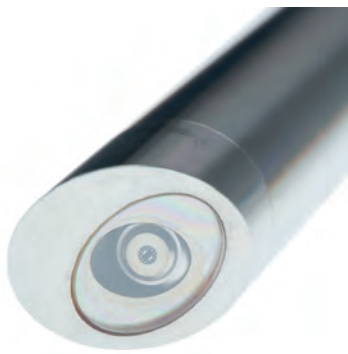


# 1/2" Industrial Fluorescence Probes

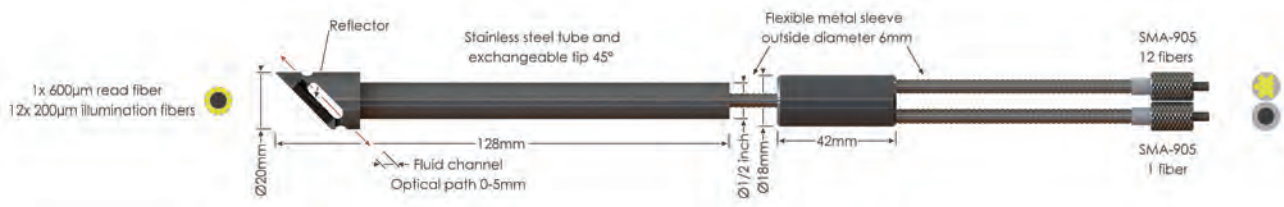


For effective measurement of fluorescence, Avantes offers this specially designed reflection probe. It features 12 excitation fibers of 200  $\mu\text{m}$  around a 600  $\mu\text{m}$  read fiber, which transports the fluorescence signal back to the spectrometer.

To turn the 45° reflection probe into a fluorescence probe, a special reflector accessory, FCR-FLTIP-IND, is attached to the probe end. It prevents ambient light to enter the probe and backscatters the excitation light. This increases the typically low fluorescence signal. The fluid channel path can be varied between 0 and 5 mm.

## Technical Data

<b>Fibers Illumination</b>	12 fibers of 200 $\mu\text{m}$ , UV/VIS
<b>Fibers Detection</b>	1 fiber 600 $\mu\text{m}$
<b>Wavelength Range</b>	200-2500 nm (UV/VIS/NIR)
<b>Connector</b>	2 x SMA-905
<b>Probe End</b>	Stainless steel 316 cylinder, 128 mm long x 12,7 mm (1/2") diameter. The probe end contains a ca. 10 mm diameter x 1 mm thick sapphire window with anti-reflection coating. The probe tip is exchangeable and waterproof. Optionally -PK for PEEK or -HY for Hastelloy® C276
<b>Fluorescence Accessory</b>	See drawing below
<b>Jacketing</b>	The optical fibers are protected by a silicon inner tube and a flexible stainless steel (BX, O.D. 6.0 mm) or chrome plated brass (ME, 5.0 mm) outer jacket. The jacketing also gives stress relieve. Optionally a waterproof, steel reinforced, silicon jacket can be provided
<b>Temperature</b>	-30°C to 100°C. (-HT version 200°C )
<b>Pressure</b>	Probe head 10 bar @ 25°C
<b>Bending</b>	Minimum bend radius: Short term (few seconds) 60 mm, long term: 360 mm



## Ordering Information

<b>FCR-UVIR200/600-2-IND</b>	• 1/2" Reflection Probe for fluorescence applications
<b>FCR-FLTIP-IND</b>	• Fluorescence Reflector Accessory for 1/2" FCR-UVIR200/600-2-IND probes

## Options

<b>-HT</b>	• High Temperature version (up to 200°C)
------------	--

All our broadband fibers are polarization resistant fibers