

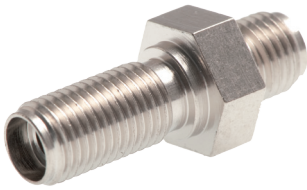
# Fiber Interconnects

To connect one fiber to another, a fiber interconnect is needed. They can be useful for coupling patch cords to fiber-optic probes and other devices, or for any multiple-fiber application where coupling of standard optical fibers and accessories is preferable to creating costly and complex fiber-optic assemblies.

## Bulkheads

Avantes bulkhead adaptors for TO-5 and TO-18 packages are ideal for coupling an LED to a fiber-optic cable: the back side has space for an LED.

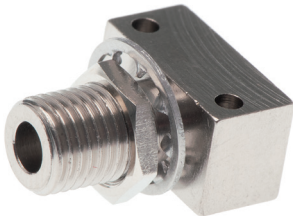
### ME-FI-SM-MM SMA interconnect



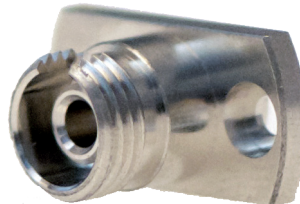
### ME-FI-FC/PC-MM FC/PC interconnect



### ME-SM-BC SMA Bulkhead



### ME-FCPC-BC FC/PC Bulkhead



## Ordering Information

<b>ME-FI-SM-MM</b>	• SMA Fiber interconnect, panel mountable
<b>ME-FI-FCPC-MM</b>	• FC/PC Fiber interconnect, panel mountable
<b>ME-SM-BC</b>	• SMA bulkhead adapter to TO-18
<b>ME-SM-BC-S</b>	• SMA bulkhead adapter to TO-5
<b>ME-FCPC-BC</b>	• FC/PC Bulkhead adapter